



JOURNEYS BY DESIGN  
— DISTINCTIVE AFRICAN TRAVEL —

# South Sudan Helicopter Expedition

“Africa as it was 150 years ago”

Hosted by Kyle de Nobrega

31<sup>st</sup> March – 10<sup>th</sup> April 2024



Newly discovered populations of Nile Lechwe





Undisturbed views from within the B4 Helicopter



An aerial photograph of a vast, hazy savanna landscape in South Sudan. The terrain is covered with a mix of green and brownish-yellow vegetation, including numerous small, scattered trees and shrubs. In the distance, a small cluster of buildings or a settlement is visible through the haze. The overall atmosphere is one of a remote, wild, and expansive natural environment.

## Introduction

South Sudan harbours the largest ungulate herds on the planet and it is covered by swathes of habitat unspoilt that stretch beyond and over the horizon. There are few places, if any, like this left on Earth and one struggles to comprehend that it has been 'hidden' from the outside world for so long.

Our safaris to South Sudan are some of the first, pioneering, adventures into a wild part of this planet where wildlife exists as it was thousands of years ago. The roadless nature of the country has not only been a conservator for the animals, but necessitates unlocking the magic by helicopter.

This Safari into 'an Africa as it was 150 years ago' is in every way a RARE access opportunity in pursuit of a spectacle witnessed by very few on Earth. Through acute logistical planning we offer you an immersion of reciprocity as we hope to share with you, and the world, a profound exhibition of everything we stand for – frontier wildernesses and conservation-centric travel.

This is beyond safari.



Migrating Tiang antelope.

FUNGA MKANDA  
FASTEN SEAT BELT

A century ago when 'Safari' emerged into the lives of 'modern' man, the very essence of that word – 'journey' – was the nucleus for this kind of travel. Today, the rarest trait of a safari is to 'discover'. We do not have a set itinerary for this safari, rather a concept from which we explore. Our journey will be guided by maps, the climate and wherever the herds take us.



## Discovery Concept:

### Day 1: Arrive Juba – the capital

Upon arrival in the VIP lounge with meet and greet, clear customs and transfer to the AFEX River camp along the banks of the Nile.

### Day 2: Fly up the Nile

Heading due north, we will fly along the Nile and into the Sudd before heading west towards Rumbek. The first night fly camping with the Dinka in cattle camp.

### Day 3: Shambe

Explore this vast impenetrable wetland in search for the elusive and endemic Nile Lechwe, Shoe-billed Stork, Sitatunga, and giant crocodiles. This might be the stronghold for Shoebill in Africa. Intact wetland wilderness to the West of the Sudd. Reports still exist of a few last surviving Northern White Rhinos within the greater Shambe area. Overnight at the simple yet quirky Hillview Hotel.



Afex River Camp



Impenetrable Sudd Swamp.









The 'unknown' greater Shambe floodplains



Sitatunga male in Shambe



Dinka Cattle Camp |





## Discovery Concept cont...

### Day 4: Extremes

Explore the greater Shambe floodplains at dawn and fly east over the Sudd before reaching the failed Jonglei canal to visit Lucy, a Mad Max excavator built in the 1960's. Head down towards Bor to refuel and possibly find the recently discovered mega herds of Nile Lechwe east of the Nile. Arrive Boma for 4 nights in simple but comfortable Meru style safari camp.

### Day 5 - 7: The magic of Boma

Spend the next 4 full days in Boma to enjoy the diverse beauty of this wild landscape and the cultures within it. This is the best time of year to view the great herds of White Eared Kob and to experience the Boma plateau.

### Day 8: Towards Badingilo

Fly west towards Badingilo NP to search for Tiang and the resident wildlife within. Overnight in or near Badingilo in simple dome tent accommodation.



Boma National Park







White Eared Kob









Nubian Giraffe



Mongalla Gazelle







Boma Camp



## Discovery Concept cont...

### Day 9: Into the clouds

After a morning exploring Badingilo for Tiang, Lion, Leopard, Cheetah and several other species, head south towards the Imatong mountains to spend the afternoon at 10 000ft. Walk in the afro-montane forests and spend the night under the stars in the clouds in simple lightweight hiking tent gear. NB! Weather dependant. Our camp will be portered into the mounatins.

### Day 10: Back to civilization

Fly west back to Juba to spend your last evening to unwind at Afex River Camp.

### Day 11: End of the journey

Transfer to the international airport for VIP departure.

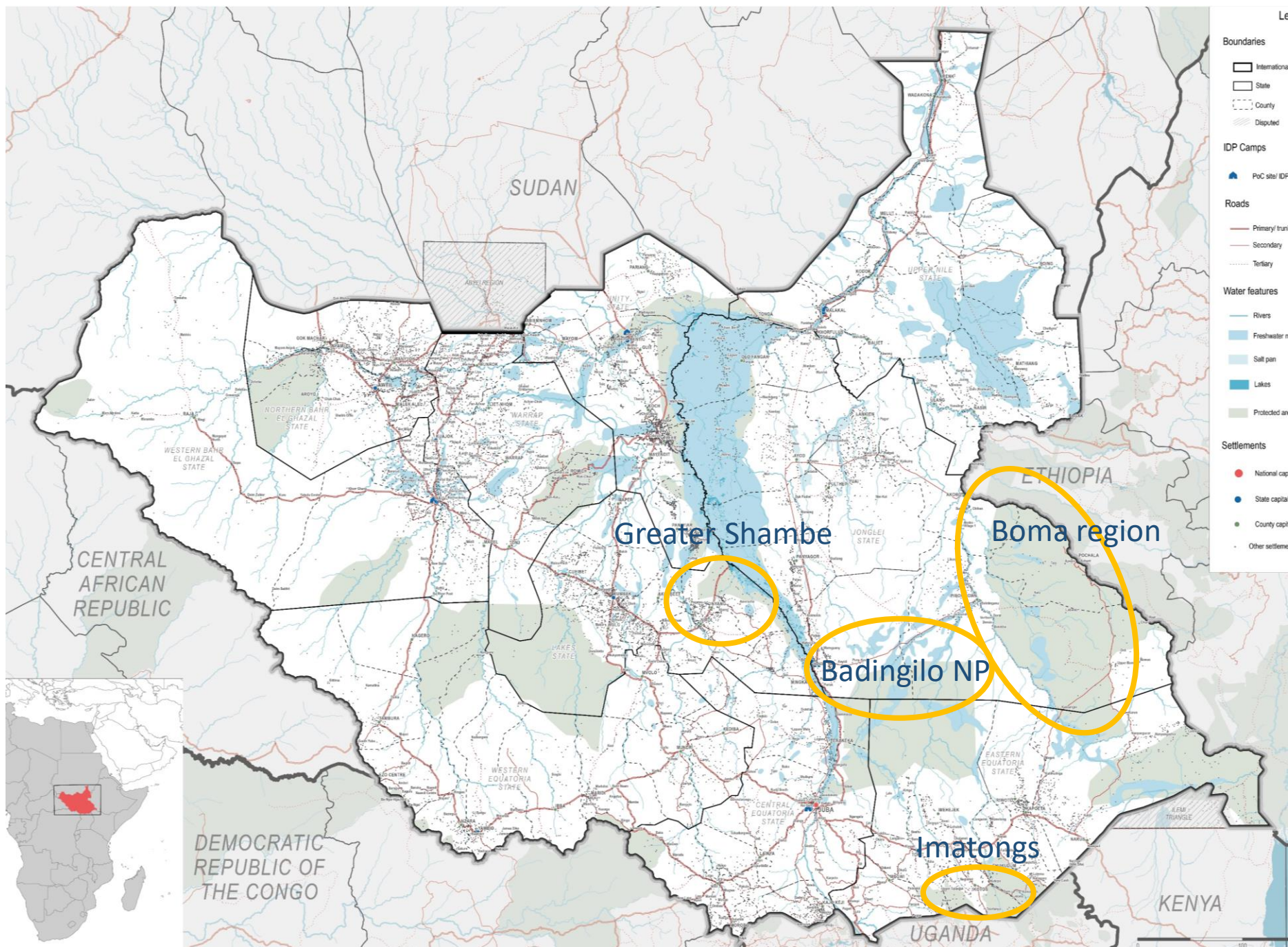
End of Expedition.



The Imatongs







## Your Host, Kyle de Nobrega

South Africa-born, but based in Maun, in Botswana, Kyle has spent the last few years exploring and guiding in the heart of Africa with a primary focus on conservation, adventure travel and refining tailored safari experiences for guests across the continent. Kyle joined the team as one of our exploration specialist and pro guides in 2022.

His curiosity for the last great wildernesses left in Africa leading him into the deepest ecosystems in central, western and eastern Africa, Kyle is one of the very few naturalist and photographic guides to host guests on safari to these last great African wilderness regions.

Having spent time guiding in South Africa in the Sabi Sands and the 'Green Kalahari', Kyle and his wife Ruth left the country and headed north towards Botswana, where they spent three years managing a photographic concession in the Tuli Block. After this, they 'settled' on the outskirts of the Okavango Delta, where they currently live with their son, Ira Wild, down a sandy track on the Boro River in Maun.

Kyle's extraordinary experience, knowledge, and ability make him one of Africa's most sought after guides. In between guiding clients, Kyle balances his time at home advising on and designing safaris and enjoying life with the family, 'making the most,' as he says, 'of the simple things in life, the things that matter most'.

**Your itinerary cost: Based on 3 travelers**

**US\$ 115 000 per person**



JOURNEYS BY DESIGN  
— DISTINCTIVE AFRICAN TRAVEL —

**Your itinerary Includes:**

Private use of helicopter throughout the expedition, on average 5 hours flight time per day

A seamless ground arrangement service

Full board accommodation in our pre-positioned camps and in Juba

Private Guide services: Kyle de Nobrega

Co-hosted throughout by South Sudan's top tourism and travel expert with over 25 years of experience

All road transfers as stipulated

All Park and Conservancy Fees

A 'first of its kind' safari into South Sudan

**Your Itinerary Excludes:**

**African Parks conservation donation: \$15 000 pp**

International flights and travel insurance

Visas

Any Covid testing if required

Additional activities

Premium brand beverages and champagne

All items of a personal nature and staff gratuities

Any new government taxes or levies that are beyond our control

An aerial photograph of a savanna landscape. The terrain is a mix of green and brown, with numerous acacia trees scattered across the plain. A winding river or path cuts through the landscape, creating a network of lines. The overall tone is natural and earthy.

## Why Journeys by Design?

Journeys by Design is a small and highly skilled company, started by Will Jones in 1999 as a specialist frontier operator. Will was raised in six different Africa countries, leading him to study environmental science, the foundation for Journeys by Design today. His passion for conservation is as strong as ever, and naturally inspires and filters down to all in the team.

Our team has over 50 years of on the ground experience; we tailor-make distinctive African journeys for only a select handful of clients and families each year. Our success rests upon the unique and distinctive style of our journeys and the personal attention paid to each safari. Not only do we use the finest camps, parks and wildlife guides in east and southern Africa, but we also explore and promote the lesser-known frontiers of this vast safari continent.

Journeys by Design only sell Africa. Africa is our sole focus and passion, our area of expertise, hence our ability to design extraordinary experiences. Our repeat and referral clients are around 70% which we hope underscores the quality we provide.



# Africa House Group

Countries supported

8

Botswana, DRC, Ethiopia, Kenya, Namibia,  
Rwanda, South Africa, Tanzania

Land supported

52,562 Ha

Hectares covered by Core Ecosystems supported

Capital invested  
in Africa

\$487,123

includes donations and impact investment

Total donated to conservation, to community development,  
and to Wild Expeditions - our impact investment in Ethiopia



# Journeys by Design

## Impact Travellers

63

Number of clients that made donations as a result of their travel

---

## Park fees via JbD clients

\$130,083

Paid to conservation landscapes in conservation fees to support ongoing management of these areas

---

## JbD client donations

\$68,992

Donated as a result of travelling with JbD



# Wild Philanthropy

Capital donated to  
conservation and  
community projects  
**\$235,900**

Grants made to 16 different partners.  
Top three countries - Kenya (43%), Ethiopia (24%)  
and Botswana (23%). 56% to core ecosystems

---

Community  
members supported  
**904**

Support through conservation and community  
development work of our partners

---

Crisis support  
**218**

Jobs supported through grants made as part  
of the ATCF